



Cypremort Yacht Club



Sailing Instructions for 2018 Sunfish "Splash" Regatta

October 6, 2018

1 RULES Current International Sunfish Class Rules and the Racing Rules of Sailing for 2017-2010 (RRS) will govern this regatta. Sailing Instruction 11.2 changes RRS A2.

2 ELIGIBILITY AND ENTRY 2.1 Eligible to compete are Sunfish sailboats. 2.2

2.2 The boat owner or responsible party shall enter eligible boat by completing the registration form at the CYC clubhouse. Registration begins at 9:00am.

2.3 There will be no entry fee.

3 SCHEDULE 3.1 Skippers' Meeting will begin 10:00 AM at clubhouse where RC will post course.

3.2 Then and there the Principal Race Officer will announce the approximate time for the first race's warning signal, identify the racing area, and the plan for subsequent races.

3.3 The racing area will be within three miles of the Cypremort Yacht Club. Depending on wind and currents the racing area may be either in Vermillion Bay or West Cote Blanche Bay.

4 COURSES Shortly before each race the Race Committee (RC) will select one of the three courses diagrammed below. Each diagram shows the course direction with a solid arrow, the starting and finishing lines with dashed lines, and the marks with circles numbered 1 or 2.

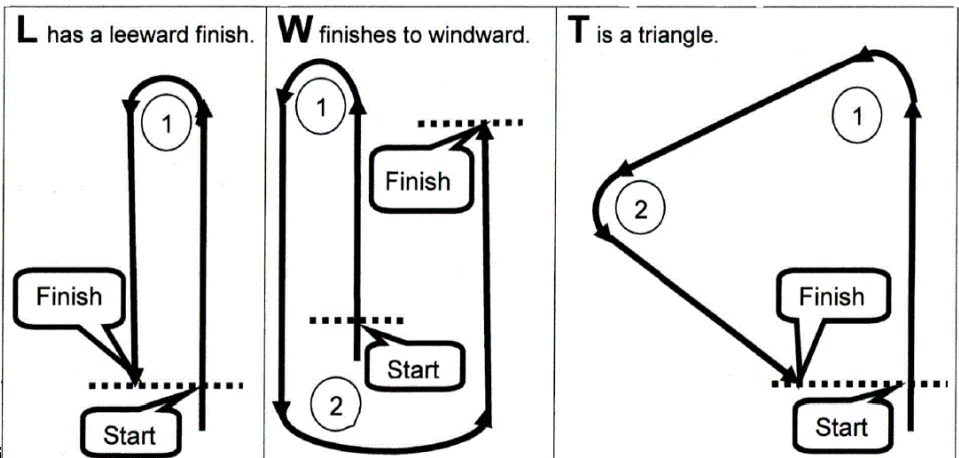
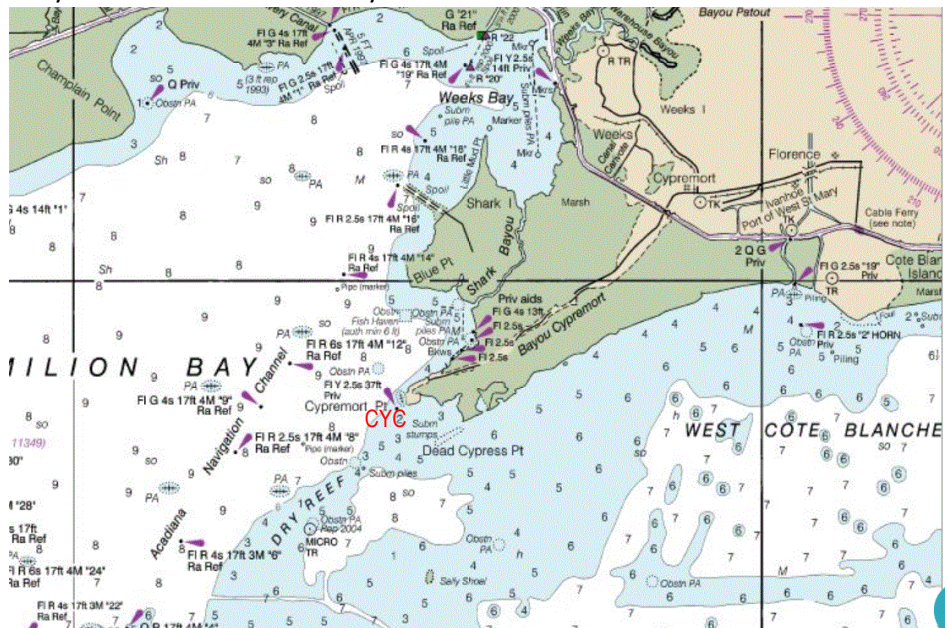
4.1 Course **L** will be start, round mark 1 leaving it to port, and finish.

4.2 Course **W** will be start, round mark 1 then mark 2 leaving both to port, and finish.

4.3 Course **T** will be start, round mark 1 then mark 2 leaving both to port, and finish.

4.4 **MARKS** numbered 1 and 2 in this SI will be orange buoys 15 inches or more in diameter.

5 STARTING AND FINISHING LINES will be between the RC boat staff displaying an orange flag and a nearby buoy displaying an orange flag.





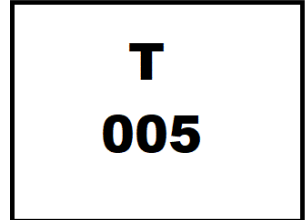
Sailing Instructions for 2018 Sunfish "Splash" Regatta

October 6, 2018

6 RACE COMMITTEE BOAT SIGNALING THE COURSE

6.1 Selecting a course from SI 4, the RC boat will signal the course on a white board with one letter, namely **L**, **W** or **T**.

6.2 That board will also signal in degrees the compass bearing from the starting line to mark 1. (For example, the board diagrammed on right signals the course is a triangle and the compass bearing to mark 1 is 5 degrees. That means after starting sail north and round mark 1, leave it to port, then sail around mark 2, leave it to port, and then finish.)



7 SCHEDULE	9:00 AM	Registration at CYC Clubhouse
	10:00 AM	Skipper's meeting at CYC Clubhouse. Race Committee will identify sailing area, signal boat and class flag. RC will also estimate time of day for first race's warning signal.
	11:00 AM	Approximate time for the warning signal for the first race. The warning signal for subsequent race will follow completion of previous race.
	After races	Awards ceremony at clubhouse.

8 TIME LIMIT If no boat finishes the race within 60 minutes, it will be abandoned.

9 NOTICES TO COMPETITORS Notices to competitors including changes to SI will be posted on the official notice board located in the CYC clubhouse.

10 REQUESTS FOR REDRESS Protest must be submitted to the PRO within 60 minutes after the last boat finishes the regatta's last race.

11 SCORING

11.1 Five races are planned but completion of one race will suffice to score the regatta.

11.2 Each boat's regatta score shall be the total of her race scores. This changes RRS A2 SERIES SCORE.

12 SAFETY AND LIABILITY

12.1 A boat that retires from a race shall notify the race committee as soon as possible.

12.2 Competitors participate in the regatta entirely at their own risk. See RRS 4, Decision to Race.

12.3 Neither CYC nor its officers, nor any member, will accept liability for material damage or personal injury or death sustained in conjunction with or prior to, during, or after the races in this series.

-----End of Sailing Instructions-----

CYC Race Committee Contact:

Bill Whitehead (337) 981-2999 home, (337) 541-4238 mobile, williamrwhitehead@gmail.com